

INSTALLATION INSTRUCTIONS UNIVERSAL SOURCE w/ MODULAR OR MINI SWITCH PANEL

Revision J



TOOLS REQUIRED

Allow approximately
1-2 hours for installation

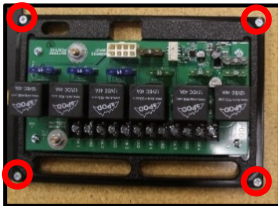
- Phillips head screwdriver
- Various sockets (for battery terminal connections)
- 3/16" diameter drill bit and drill (for Source bracket)
- DREMEL tool, small saw or box knife (for modular panel only)
- 9-foot piece of string or wire to measure distance from switch panel to Source.

NOTES & WARNINGS

- Never reverse polarity on battery cables.
- NEVER chassis ground the sPOD's negative battery cable. Always attach both positive and negative accessory wires to the sPOD.
- Although the sPOD system is weather proof, do not submerge in water. Do not spray cleaner onto unit or into any openings. Always use a soft towel or cloth for cleaning purposes and or compressed air to dry.
- System will shut down when voltage drops to 11.6 V (2 minute delay) and requires 12.8 V to reinitialize (start engine).
- Do not tamper, open or remove any factory-installed components; this will void the warranty.
- Do not replace 2 amp or the 5 amp fuse with any other rated fuse; this will void the warranty.
- Do not attach any additional electrical accessories to the battery terminals on the Source; this will void the warranty.

INSTALLATION PROCEDURE

Temporarily remove the Source board with the battery cables from the mounting bracket with the 4 screws at each corner. Don't lose these screws.



Find a flat location such as the top of the fuse box to mount the Source. Remove the fuse box lid and use the provided template to drill the bracket mounting holes on top of the lid. Use the screws and washers provided with the bracket to mount the bracket to the lid.



Run the control cable through the vehicle firewall to the cab. There should be an existing passage through the firewall such as the one shown below. Use tape to protect the plugs.

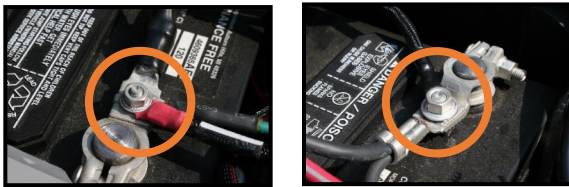


Run the connector up through opening in plastic then plug it into the receptacle. Reinstall the Source board on the bracket with the screws from the previous step. **NOTE:** Do not over tighten these screws or the corners on the board may crack.



**AFTER INSTALLATION, YOU MUST
START THE ENGINE TO ACTIVATE
THE SYSTEM!!**

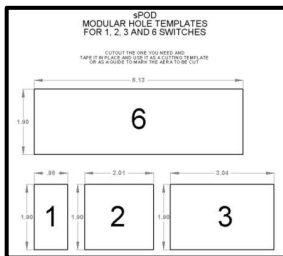
Connect **Positive** & Ground wire to battery terminals. Use supplied cable ties to secure all cables and the circuit breaker.



Measure how far you will be mounting your switch panel from the Source. It helps to use a 9-foot string to map out the harness position from the source to the switch panel, as the wire harness is **9 feet**.

MODULAR SWITCH PANEL

Use a DREMEL or box knife and the provided "Modular Hole Template" to cut out the mounting location for the switch panel. After the hole is cut, the modular panel will press into place.



MINI BEZEL SWITCH PANEL



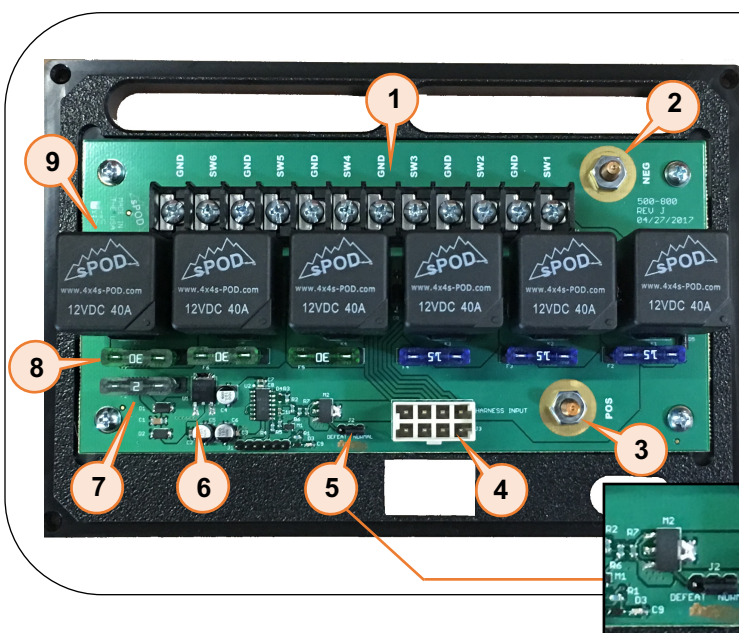
Dodge Ram center console



Below the dash



**AFTER
INSTALLATION,
YOU MUST
START THE ENGINE
TO ACTIVATE THE
SYSTEM!!**



1. Attach your accessories here. SWx Is the Positive and GND is the negative terminals.
2. Negative battery terminal.
3. Positive battery terminal.
4. Switch panel harness input.
5. This jumper is used to defeat the low voltage detection.
6. Low voltage detection circuit. [Once the system detects a low voltage (11.6VDC or lower) after 2 minutes, the system will shut down. Turn off all switches on sPOD and start the vehicle to enable the sPOD again.]
7. Harness/Low voltage detection circuit fuse.
8. Accessory fuses. Use the appropriate rated fuse for the accessory you are attaching (max. 30 AMPs).
9. Relays that are removable.

Whenever possible, keep your engine running when powering electrical accessories!