

sPOD Installation Instructions
2003 – 2006 Wrangler
www.4x4s-POD.com

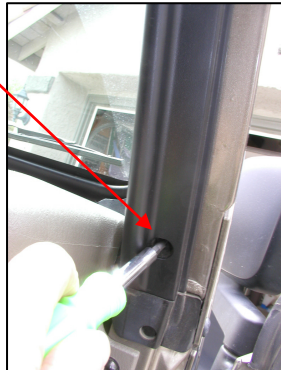
Tools required

- Phillips head screw driver.
- Flat head screw driver.
- 15mm socket with a 6" extension
- 1 inch drill / hole saw (for harness exit)



1. Assembly Instructions

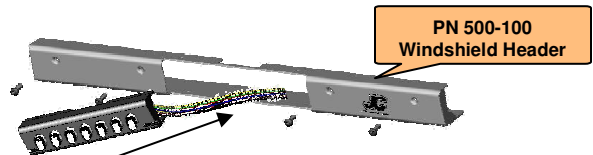
- Remove the battery from the Jeep.
- Remove existing plastic windshield header cover by swinging the visors out of the way and pull the plastic windshield header straight out until all 5 clips pop out of windshield frame.
- Remove the passenger sun visor and then loosen the right hand (passenger side) pillar piece using a phillips head screwdriver to loosen the 3 screws. "Note" that you do not need to remove the plastic, just loosen it!



PN 500-300 Clip



- Install PN500-300 Clips 4pl. where shown in the original horizontal slots on the windshield frame by inserting one end of the clip's flange and then angle upward. Use a flat head screwdriver and push clip flange in until it snaps in place.



PN 500-100
Windshield Header

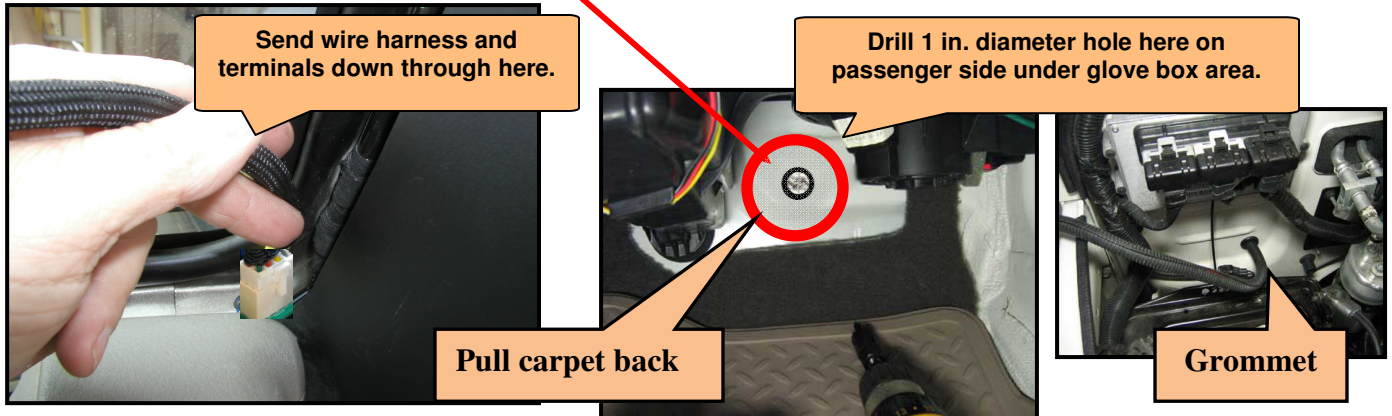
- Install switch panel into header PN500-100 feed your wiring through the front switch panel opening and feed the harness out through the end as required.
- Attach switch bezel to header using the 10/32 Phillips head screws & lock washers provided, slide switch panel through the opening, align holes and tighten all 4.

sPOD Installation Instructions

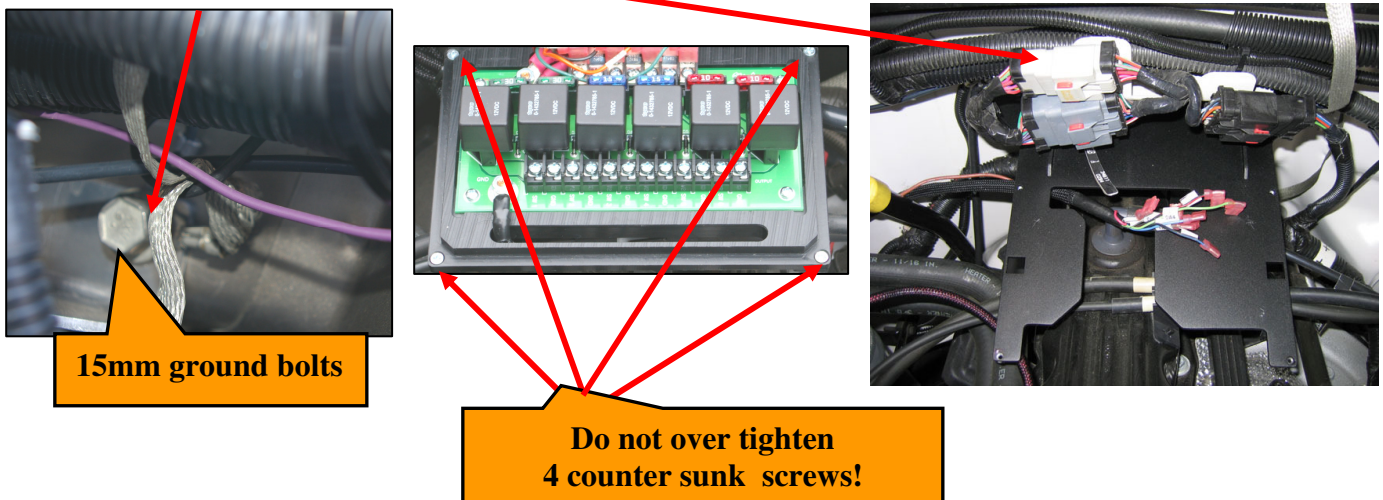
2003 - 2006 Wrangler

www.4x4s-POD.com

- Now you are ready to attach the entire assembly to the windshield using the 1/4-20 Phillips head screws and lock washers. Tighten all 4 screws (**careful not to over tighten**) while watching the alignment of the unit against the windshield.
- Guide wire harness through right side of the **sPOD** header unit. Keep the harness as close to the windshield rubber as possible. If you purchased the air gauge kit, then place the air line under the plastic pieces and lead it all the way down the windshield pillar and down through the dash on drivers side.
- Remove glove box and feed wire harness down behind glove box and out of the way for now.
- Now drill a 1" dia. hole where shown from inside of the Jeep below the glove box area.



- Install supplied grommet and feed connectors through the firewall into the engine compartment.
- Re-install the battery.
- Next remove the 4 counter sunk screws from the plastic to the bracket and slide the assembly off the bracket before installing the Source mounting plate.
- Remove the two grounding terminal bolts using a **15mm** socket located on firewall just above the valve cover behind OEM harness and attach mounting plate. **Be sure to reattach grounding terminals!** See below:

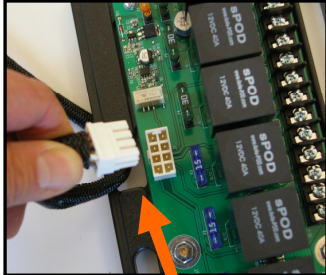


sPOD Installation Instructions

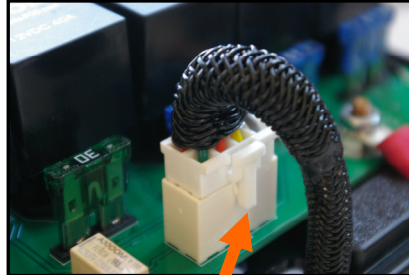
2003 - 2006 Wrangler

www.4x4s-POD.com

- Next attach switch harness plug from the sPOD harness to the Source as shown below.



Run white connector up through opening in plastic



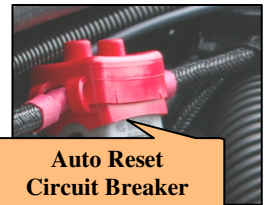
Plug connector in with key facing outward

- Connect **Positive** & **Ground** wire to battery terminals. Use supplied cable ties to secure all cables.

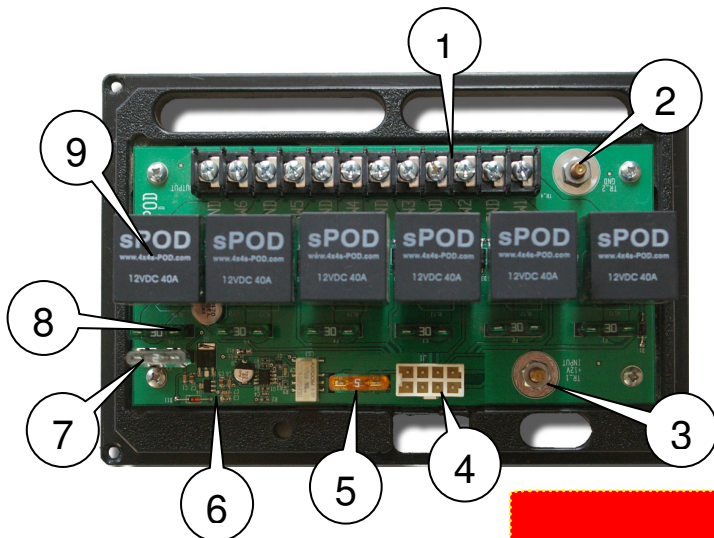


Ground connection (BLACK)

Positive connection (RED)



Auto Reset
Circuit Breaker



- Attach your accessories here. SWx is the **Positive** and GND is the negative terminals.
- Negative battery terminal.
- Positive battery terminal.
- Switch panel harness input.
- Switch panel fuse.
- Low voltage detection circuit.
- Low voltage detection circuit fuse. Remove this fuse to disable LVCO
 - If the LVCO detects a low voltage (10.6VDC) and shuts the sPOD down, turn off all switches on sPOD and start the vehicle to enable the sPOD again.
- Accessory fuses. Any fuse can go here up to 30 AMPs. (6 pl.)
- Relays that are removable.

Always keep your engine running whenever possible when powering electrical accessories

After installation
!!!Must start engine to activate system!!!