



## TOOLS REQUIRED

- Phillips head screwdriver
- 15mm socket with a 6" extension
- T-20 and T-40 TORX bit
- 1" drill / hole saw (for harness exit)

Allow approximately  
2 hours for installation

Please refer to the "Get to know your SourceLT"  
pamphlet for operational instructions

## NOTES & WARNINGS

- Never reverse polarity on battery cables.
- Always attach both positive and negative accessory wires to the sPOD's terminals.
- Any modifications to any of the sPOD wire harnesses will void the warranty.
- Although the sPOD system is weather proof, do not submerge in water. Do not spray cleaner onto unit or into any openings. Always use a soft towel or cloth for cleaning purposes and or compressed air to dry.
- System will shut down when voltage drops to 11.6 V (2-minute delay) and requires 12.8 V to reinitialize (start engine).
- Do not tamper, open or remove any factory-installed components; this will void the warranty.
- Do not replace 2amp fuse with any other rated fuse; this will void the warranty.
- Do not attach any additional electrical accessories to the battery terminals on the SourceLT; this will void the warranty.

## INSTALLATION PROCEDURE

- Install switch panel into header by feeding your wiring through the front switch panel opening and attach switch bezel to header using the **10/32** Phillips head screws & lock washers provided. Then put this assembly aside for now.
- Remove existing sun visor clip brackets, sun visors and footmans loop using a T-20 TORX bit. **NOTE:** Some Jeeps used rivets to attach footmans loop! You may have to drill it off.



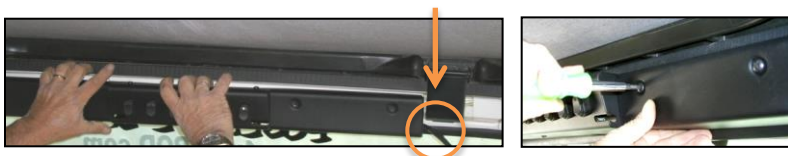
- Remove the T-40 TORX bolts from the roll bar (each side) to make room for new visor brackets.



- Install the sPOD mounting system using all 6 of the T-20 TORX screws from the original visor mounting brackets along with flat washers. Re-install footmans loop. You can order the later model loop (PN 55177497AA from Chrysler / Jeep).



- Attach the entire assembly to the windshield using the  $\frac{1}{4}$ -20 Phillips head screws and lock washers. Tighten all 4 screws (**careful not to over tighten**) while watching the alignment of the unit against the windshield. Feed the wire harness out the right-hand side while **leaving slack** in the harness behind header for easy removal in the future.

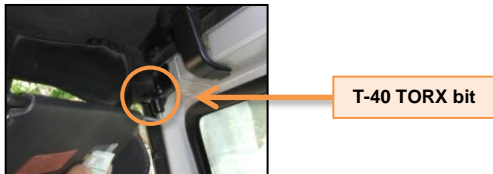


## INSTALLATION INSTRUCTIONS || SOURCELT FOR 1997 - 2002 JEEP WRANGLER TJ

- Attach sun visor relocating brackets where shown to sun visor mounting bracket using the **8-32** screws supplied.



- Attach the visor with relocating bracket using the existing T-40 TORX bolt and just snug it in place for now.  
**NOTE:** Some aftermarket roll cages may interfere with the sPOD visor relocating brackets, so they may require slight modifications to them.



- Rotate sun visors around and push the plastic pin into sPOD bezel as shown below, then check alignment of visor and then tighten the T-40 TORX screw. Check for alignment again and then adjust visor so it rotates upward and clears sPOD bezel. If the visor hits the sPOD bezel, just slide the vinyl part of the visor over the shaft and check for clearance again.

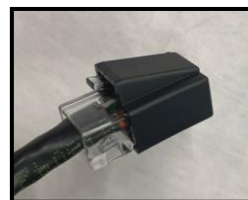
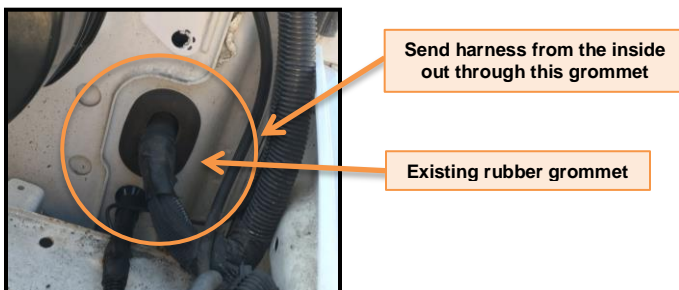


- Guide wire harness through sPOD header unit leaving plenty of wire behind the sPOD for future removal. Keep the harness as close to the windshield rubber as possible. If you purchased the air gauge kit, then place the air line under the rubber gasket and lead it all the way down the windshield and down through the dash. Place stick back cable tie downs where shown as required for a clean look.



Leave protective cap on until finished passing thru firewall

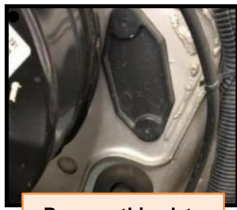
- Guide wire harness through the left side of the sPOD header unit. Keep the harness as close to the windshield rubber as possible. If you purchased the air gauge kit, then place the air line under the plastic pieces and lead it all the way down the windshield pillar and down through the dash on the driver side.
- On a **manual transmission** equipped Wrangler TJ, you can see just to the lower right of the brake booster that there is an existing grommet. You may pass the cable through this grommet from the inside, passing the cable into the engine bay.



Leave protective cap on until finished passing thru firewall

## INSTALLATION INSTRUCTIONS || SOURCELT FOR 1997 - 2002 JEEP WRANGLER TJ

- On an **automatic transmission** equipped Wrangler TJ, you will find the clutch master cylinder block off plate to the right of the brake booster. Use a 14mm socket to remove 2 bolts. Mark and drill a 5/8" hole in the center and reinstall plate.



Remove this plate



Cable pass thru



Find center and mark it.

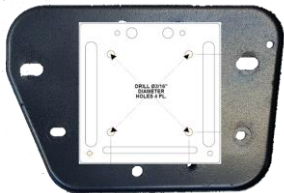


Drill 5/8" hole where shown

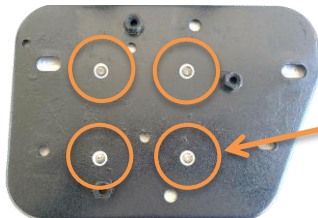
- Locate the ABS metal tray located on driver side, below the brakes master cylinder, and remove the 4 bolts that hold the tray in place.



- Using the provided paper drill template, center it & tape it where shown (be careful not to overlap on any existing holes).
- Drill the 4 holes using a 3/16" diameter drill bit.



- Turn the tray upside down and use the provided Philips head screws and flat washers to install the SourceLT to the tray. Reinstall the tray assembly making sure cables are free and clear.



Screws and washers provided



Verify fitment and that the preexisting holes are clear for bolts

- Run Ethernet control cable up from the bottom of the SourceLT through the slot in plastic. Plug cable into the receptacle.



- Snugly route power leads along firewall over to the battery, using supplied cable ties to secure. Connect Positive and Ground wire to battery terminals. Use supplied cable ties to secure all cables.



Ground connection (Black)

Positive connection (Red)

**AFTER INSTALLATION,  
YOU MUST START THE  
ENGINE TO ACTIVATE  
THE SYSTEM!!**