



Polaris Pro-R, Turbo-R, Pro-XP Mini6 Steering Wheel Kit (87-0094)



2950 Norman Strasse San Marcos, CA 92069

Phone 661-775-7799 • Fax 760-560-0383

tech@4x4s-pod.com • www.4x4spod.com



Warranty & Returns Policy

WARRANTY AND REPAIR POLICY

sPOD offers a non-transferable 5-year limited warranty on electronic parts and components from manufacturers defects from the date of purchase (Effective on products purchased after 4/1/23). sPOD will repair or replace items in question and return them to Buyer at no charge. If the identical product is no longer available, sPOD will replace with a similar product of equal value. sPOD will not be responsible for any indirect or consequential damages in connection with defective merchandise.

Exclusions:

Products that have been subjected to abuse, misuse, accident, alteration, modification, improper installation, tampering, or any use other than the product's designed purpose will void the warranty. The sPOD warranty excludes the following: Installation errors, abuse, misuse or crash damage, reverse polarity of battery cables, changing the 2 amp fuse for any other rated fuse, cutting off our connectors, splicing into our wires/harnesses, attaching anything other than our battery cables to our positive and negative terminal studs on our BantamX/SourceLT boards, changing our supplied switches (switch body), removing the actuators without using our specific actuator removal tool. This warranty shall be automatically voided if the items sent for warranty replacement are modified in any way or were not used as intended or applicable. Additionally, this warranty excludes normal wear and tear. NOTE: Any or all aftermarket brake controllers, hi-amp solenoids or any hi-amp relay that is attached to the same positive battery post will cause irreversible damage to the sPOD system. This will void all warranties. This warranty shall be automatically voided if the items sent for warranty replacement are returned with water/liquid/chemical damage to any electrical component.

The buyer MUST provide a copy of the original invoice or have completed the online product registration. Shipping responsibilities and/or charges will be determined once a claim has been opened. sPOD systems will be repaired or replaced at manufacturer's discretion. This warranty does not cover miscellaneous expenses, including, but not limited to, outside labor costs incurred for the installation, removal, replacement, and repair or troubleshooting. **Please contact sPOD to assist with troubleshooting prior to uninstalling your entire system as the solution may not require that the system be removed.**

All claims must be made in writing by mail or e-mail directly to sPOD:

By Mail: sPOD 2950 Norman Strasse Road San Marcos, CA 92069

By E-mail: Tech@4x4s-pod.com



RETURN AND REFUND POLICY

sPOD will accept returns within 30 days from receipt of merchandise under the following conditions: Merchandise needs to be returned unused, with all printed material and accessories enclosed. If not in its original condition or the product shows signs of installation, additional charges will be applied or may not be accepted. All returns must be accompanied with a return merchandise authorization (RMA) number (to be provided by sPOD at time of request) and a receipt of original purchase.

To obtain an RMA number, please email Tech@4x4S-pod.com with your full name, invoice number, and part number of the item(s) you need to return.

A 15% percent restocking fee will apply after 30 days. All shipping charges are at the buyer's expense. The original shipping fees are non-refundable. We strongly recommend you insure all packages before shipping. We are not responsible for lost or stolen merchandise while in transit. We assume liability once the returned system has reached our facilities. Once your return shipment has been received and approved, your return will be processed. Failure to comply with the process and terms stated above may result in a processing delay and/or a refusal of the returned package.

The above warranties and policies are subject to change without prior notice.

Required Tool(s):

- T40 Torx
- Phillips head screwdriver
- 7/16", 10mm wrench
- Trim removal tool
- ½" deep socket and ratchet

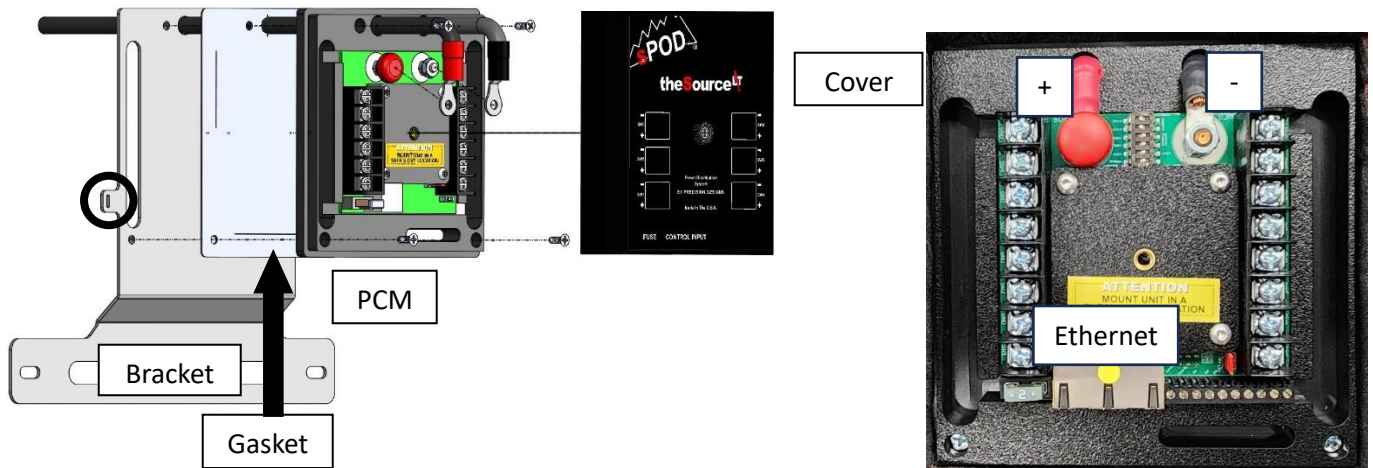
****For a color copy of instructions, visit your vehicle specific application on BajaDesigns.com ****

Parts List:

 <p>(SourceLT) (Qty: 1) SourceLT w/ 84" Batt</p>	 <p>(91-0002) (Qty: 1) Coiled Ethernet Cable</p>	 <p>(87-0021) (Qty: 1) PCM Bracket</p>	 <p>(20-1283) (Qty: 2) ¼-20x1/2" Hex Head Bolt</p>
 <p>(20-1278) (Qty: 2) ¼"-20 Extruded U Nut</p>	 <p>(20-1282) (Qty: 2) ¼ Flat Washer</p>	 <p>(20-1310) (Qty: 2) 5/16" Flat Washer</p>	 <p>(20-1371) (Qty: 2) 5/16"-18x5/8" Flat Washer</p>
 <p>(20-1611) (Qty: 2) Zip Tie Tab</p>	 <p>(20-0240) (Qty:2) M4x.7x8 Black Phillips Head Screw</p>	 <p>(20-1610) (Qty:3) 4" Zip tie</p>	

To begin, make sure the vehicle is in park, on level ground and the parking brake is engaged.

Step 1:



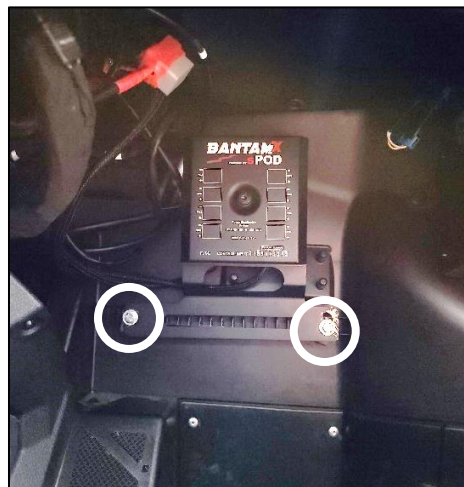
Remove the PCM cover. Attach the PCM to the bracket using a Phillips head screwdriver and the included screws making sure the included gasket is in between the two. Make sure the battery cables pass through the battery cable holes. Route the control cable in through the left slot and plug it into either port.

Step 2:



Place two included extruded u-nuts around the two tabs in the passenger footwell (circled).

Step 3:



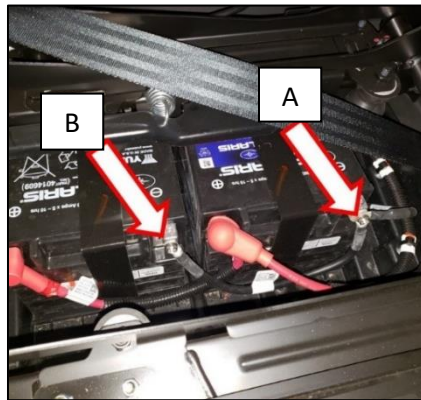
Attach the PCM bracket to the u-nuts using the included 7/16" hex bolts and washers with a 7/16" wrench.

Step 5:



Remove the driver and passenger seats by lifting the latch located at the front of the seat and rocking forward.

Step 6:



Using a 10mm wrench, disconnect the negative cables from the batteries. Start by disconnecting battery A's negative cable first (furthest rearward battery connection). **Some models may have only one battery.**

Step 7:



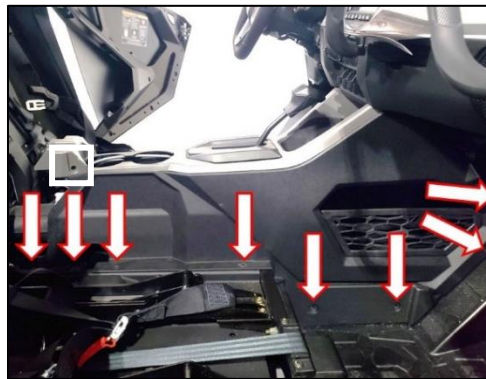
Remove the rear upper close-off panel by turning the 4 quarter-turn latches counter-clockwise until they release. Using a trim removal tool, remove the cupholder insert (circled) from the center console.

Step 8:



Using the T40 Torx, remove the 4 bolts located near the back of the center console container. Open the center console and turn the 2 quarter-turn fasteners (circled) clockwise until they release. Lift up and remove the center console container assembly.

Step 9:



Using a trim removal tool or flathead screwdriver, remove the 2 plastic push rivets (one side boxed) behind the cup holders. Using a T40 Torx, remove the 8 bolts (arrowed) securing the passenger side of the center console.

Step 10:



Locate and remove the 2 plastic push rivets on the top passenger side center console panel located under the dash.

Step 11:



Carefully remove the LED on the passenger side center console panel by pressing the plastic trim ring back through the panel.

Step 12:



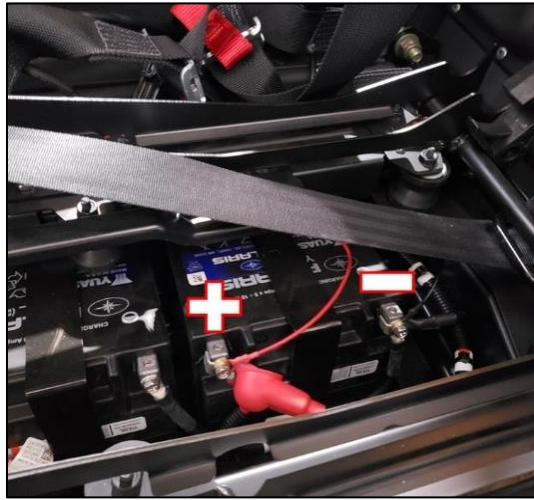
Carefully lift upward on the center panel starting near the back to disengage the retention tabs. Release the passenger side center console panel from the vehicle but leave it near its mounting location.

Step 13:



Route the battery cables from the PCM through the grommet on the front of the center console panel. Run the wires through the center console and to the batteries underneath the driver's seat. The white circle shows the trans tunnel access hole.

Step 14:



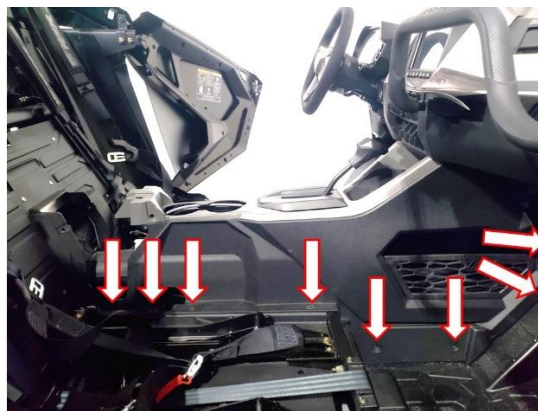
Using a 10mm wrench, connect the positive (red) ring terminal to the positive post of the battery. Repeat by connecting the negative (black) ring terminal to the negative post of the battery. If you have 2 batteries. Make sure both negative leads are connected if equipped with dual batteries.

Step 15:



Set the passenger side center console panel upright and almost into place. Plug the footwell LED into its mounting hole (arrowed). Press the panel into place making sure the PCM Power cable wires do not pinch. Insert the two forward push rivets to hold the panel in place (circled).

Step 16:



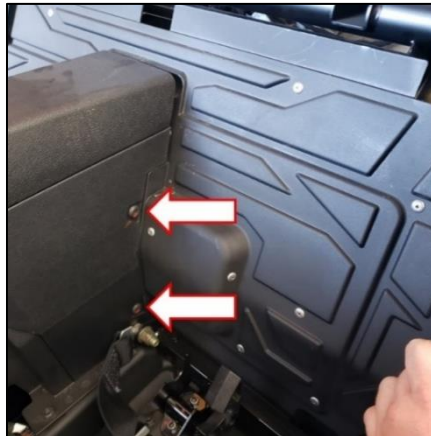
Reinstall the 8x T40 Torx bolts from step 9 and 2 push rivets from step 10.

Step 17:



Press the top center console panel into place making sure the retention tabs are properly aligned. Reinstall the push rivets located just behind the cup holders.

Step 18:



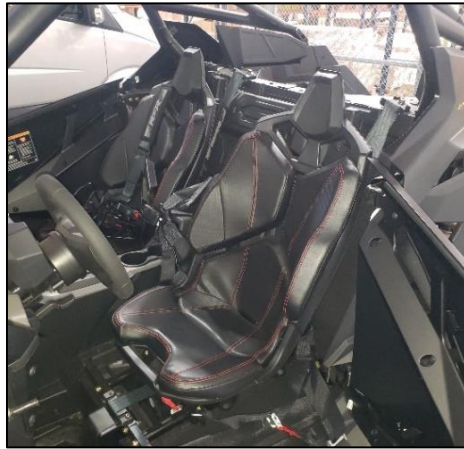
Reinstall the cupholder insert until the retention tabs engage. Reinstall the center console compartment and secure using the T40 Torx bolts (arrowed), 2 on each side of the console and the quarter-turn fasteners underneath the lid. Make sure the harnesses do not become pinched between any panels.

Step 19:



Reinstall the upper block-off panel and secure using the 4 quarter-turn latches released in step 7.

Step 20:



Reinstall the driver and passenger seats by hooking the front of the seat base and pivoting them into place. Make sure the harnesses do not become stuck behind the seats.

Step 21:



Using a 10 mm socket and ratchet, remove the right bolt securing the fuse box. Add the zip tie tab and reinstall the bolt.

Step 22:



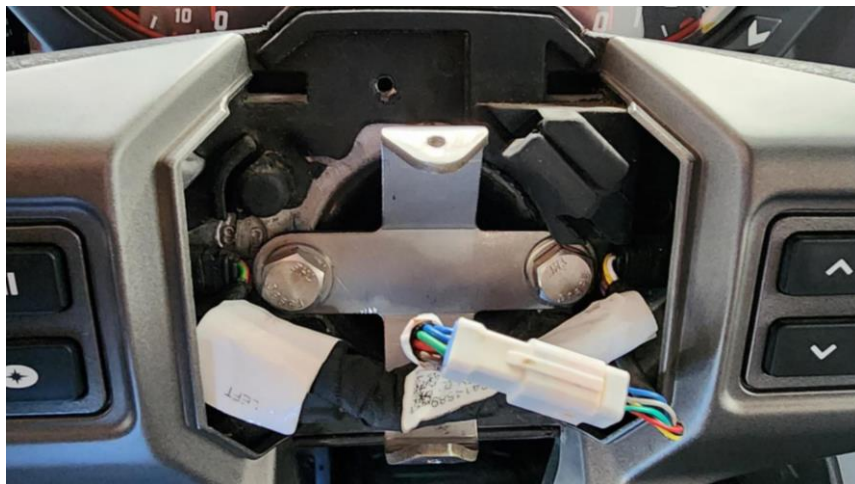
Using a 7/16" wrench, remove the nut on the back of the Mini 6. Add a zip tie tab and to the stud and reinstall the nut. It is recommended to bend the zip tie tab for an easier install.

Step 23:



Using a trim removal tool, remove the steering wheel center cover by prying at the top and bottom and discard.

Step 24:



Locate the support bracket and align the two mounting holes with the threaded holes in the steering wheel. Attach it using the 1/2" hex head bolts and washers and the 1/2" deep socket.

Step 25:



Run the straight end of the ethernet cable through the left slot of the SourceLT and plug into the ethernet port. Secure the cable to the PCM bracket using the zip tie tab circled in step 1. Run the cable through the dash to the driver side footwell and secure it using the zip tie tab added to the fuse box bolt. Secure the cable to the steering column w/ a zip tie as shown leaving ~9" of coiled section hanging.

Step 26:



Plug the coiled cable into the controller and align it with the bracket holes. Use the final zip tie to secure the straight section of the cable to the zip tie tab on the back of the controller. Using the M4 hardware and a Phillips head screwdriver, secure the Mini 6 to the support bracket. Make sure the coiled section of the cable runs through the small access hole at the base of the controller.

*Tie all wires away from sharp, hot, and/or rotating components.

* Re-torque all the fasteners after 100 miles.

*Your install is now complete! Thank you for choosing sPOD.