

INSTALLATION INSTRUCTIONS

JEEP WRANGLER JL/JT SourceSE SYSTEM

Revision 2.0



Allow approximately 1 hour for installation.

TOOLS REQUIRED

- Phillips head screwdriver
- 10mm socket
- T-40 TORX (use Jeeps supplied tool kit)

AFTER INSTALLATION, YOU MUST START THE ENGINE TO ACTIVATE THE SYSTEM!!

NOTES AND WARNINGS

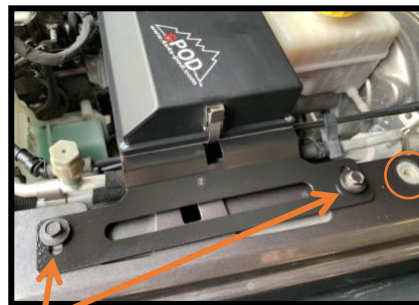
- Never reverse polarity on battery cables.
- Although the sPOD system is weather proof, do not submerge in water. Do not spray cleaner onto unit or into any openings. Always use a soft towel or cloth for cleaning purposes and or compressed air to dry.
- System will shut down when voltage drops to 11.2 V (2-minute delay) and requires 12.8 V to reinitialize (start engine).
- Do not tamper, open or remove any factory-installed components; this will void the warranty.
- Do not replace 2 amp fuse with any other rated fuse; this will void the warranty.
- Do not attach any additional electrical accessories to the battery terminals on the Source; this will void the warranty.

INSTALLATION PROCEDURE

1. On driver's side fender, locate two 10mm bolts as shown below.



Remove these two bolts



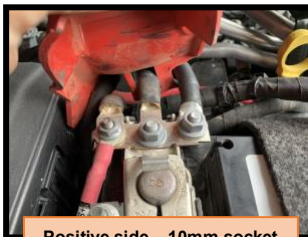
Place bracket over holes. Reuse the bolts and tighten. Leave far right hole open.



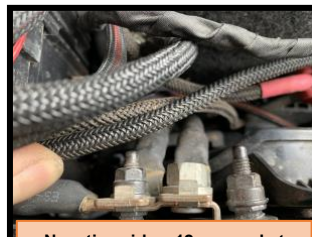
2. Snugly route power leads along firewall over to battery using supplied cable ties to secure.



3. Connect the Positive cable to the battery auxiliary terminal stud and the Negative to the ground stud on inner fender. Use supplied cable ties to secure all cables.



Positive side – 10mm socket



Negative side – 12mm socket

INSTALLATION INSTRUCTIONS

JEEP WRANGLER JL/JT SourceSE SYSTEM

Revision 2.0



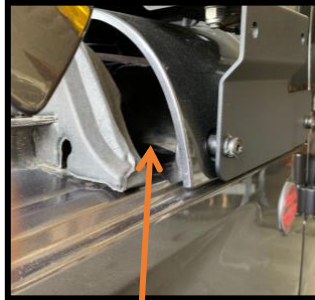
- Using the T-40 TORX bit supplied by Jeep, remove the 4 windshield bolts that hold the windshield up and fold the windshield forward. Next, pass the Ethernet cable through the cowl and up to the windshield threshold. Lay the cable flat and bring it out to where the location of the sPOD controller will be installed.



T-40 TORX bit from the Jeep tool kit



Pass cable through here

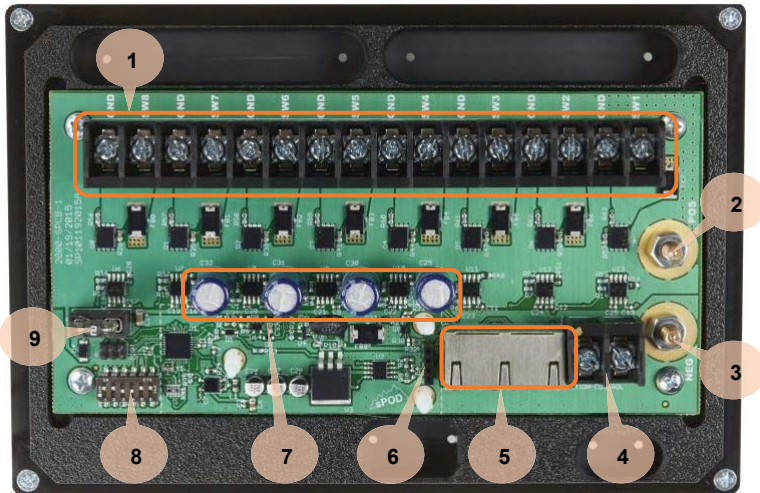


Pass cable through cowl



Pass cable through windshield threshold

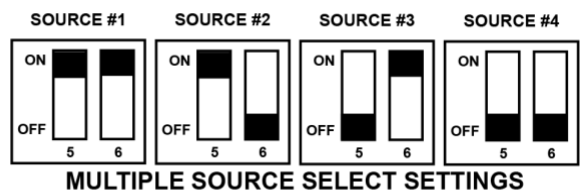
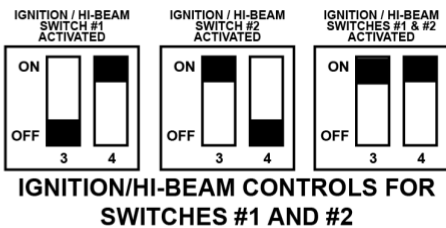
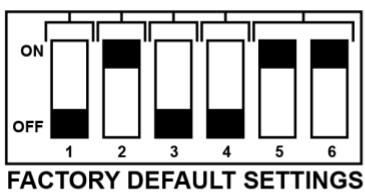
GET TO KNOW YOUR SourceSE



- Attach your accessories here.
SWx is the **Positive** and GND is the Negative terminals.
- Positive battery terminal.
- Negative battery terminal.
- Ignition control inputs for switches 1 or 2 only.
- Switch panel harness input (CAT-5 Ethernet). (TWO)
- Bluetooth receptacle.
 - This is where you would plug in the Bluetooth module (purchased separately)
- Fault protection devices, please do not touch or bend these.
- DIP switch configurator. See below.
- Reset fuse. Remove fuse for 10 seconds and replace for reset.

Whenever possible, keep your engine running when powering electrical accessories!

DIP SWITCH CONFIGURATOR



AFTER INSTALLATION, YOU MUST START THE ENGINE TO ACTIVATE THE SYSTEM!!