

# INSTALLATION INSTRUCTIONS

## 2016 YAMAHA YXZ



Allow approximately 2 hours for installation

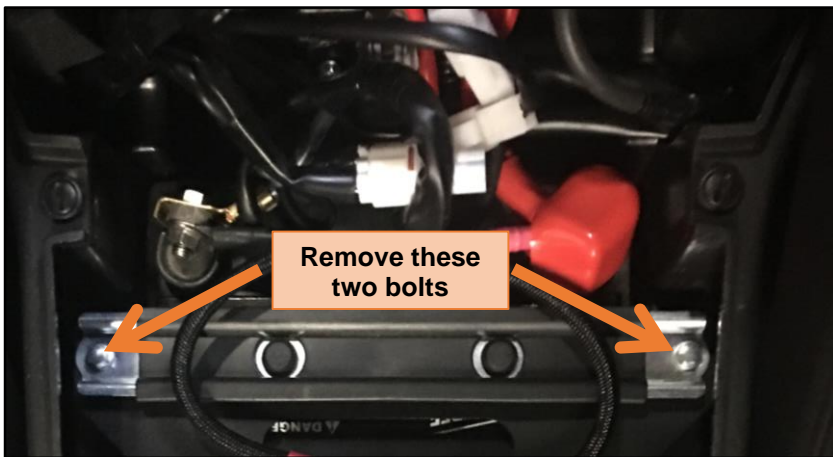
### NOTES AND WARNINGS

- These instructions do NOT show how to remove the plastic cover/access pieces on the YXZ.
- Never reverse polarity on battery cables.
- System will shut down when voltage drops to 11.2 V (2 minute delay) and requires 12.8 V to reinitialize.
- Do not tamper, open or remove any factory-installed components; this will void the warranty.

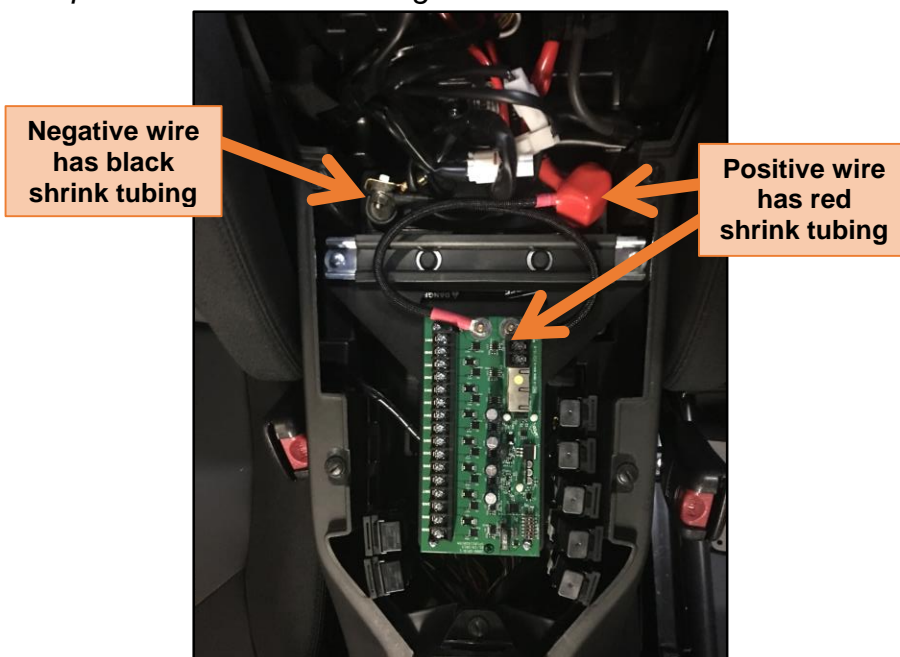
### TOOLS REQUIRED

- Phillips head screw driver
- Ratchet (1/4" or 3/8" drive)
- 10mm & 12mm sockets
- Power Drill and a 1/8" drill & a 1" hole saw (for rubber grommets)

- Remove the plastic center console between the seats.
- Remove front hood.
- Remove battery hold down clamp using 12mm socket.



- Install the Source bracket under the battery clamp as shown and reinstall the bolts and tighten.
- Attach the positive and negative battery cables to the battery. Be very careful to watch the polarity!  
*Red is positive and Black is negative.*



# INSTALLATION INSTRUCTIONS

## 2016 YAMAHA YXZ



- Drill the two 1" diameter holes for the grommets in the back side of the cubby. Position to the passenger's side. This is where the cables will exit. Install the two grommets.
- Feed all wires and cables through the grommet(s).



Left side of back of cubby



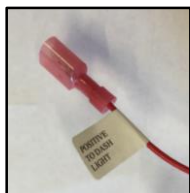
- Hold switch panel in place and center on opening.
- Use the 1/8" inch drill and drill 2 holes only using the panel as a template.



Start with these two holes

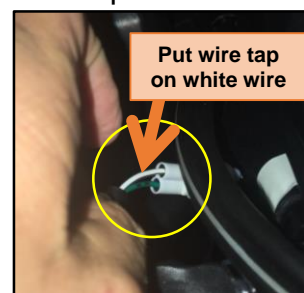
- Install two of the screws by *gently* tightening. Remember you are working with plastic, so be gentle and **do not over tighten!**
- Next look carefully that you are aligned with the cubby and that you do not see any openings. This will assure that you are drilling into the front flat surface and not into an opening.
- Use the 1/8" inch drill and drill remaining holes using the panel as a template.
- Install remaining screws! Remember you are working with plastic, so be gentle and **do not over tighten!**

- Attach red pilot lights wire to the 12 volt power outlet positive wire using supplied wire tap.



Back side of 12 volt power plug

Wire tap



Put wire tap on white wire

This is the wire that attaches to white the wire tap

# INSTALLATION INSTRUCTIONS 2016 YAMAHA YXZ

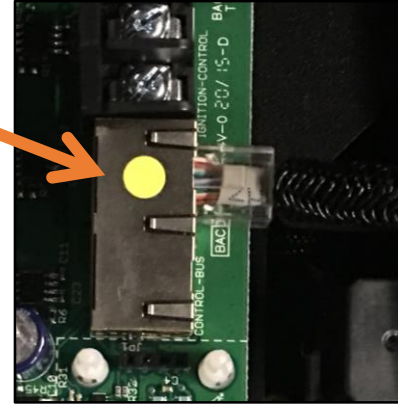


- Guide the CAT-5 cable harness through all the plastics going toward the passenger's side by lifting and tucking the wires up and away from any sources of heat. Run the cable all the way up to our circuit board and plug the CAT-5 cable into any of the two ports on the Source.



Plug control cable into any of these two ports.

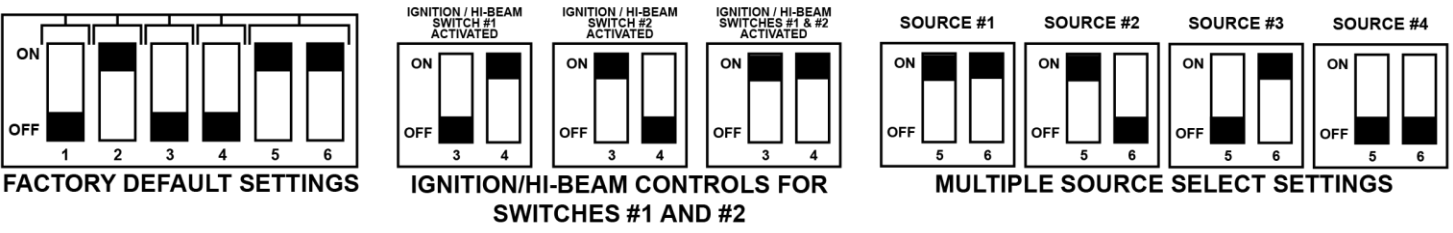
Route all cables along this side and secure using supplied Zip-Ties.



1. Attach your accessories here. SWx is the **Positive** and GND is the Negative terminals.
2. Positive battery terminal.
3. Negative battery terminal.
4. Ignition control inputs for switches 1 or 2 only.
5. Switch panel harness input (CAT-5 Ethernet). (TWO)
6. Bluetooth receptacle.
  - This is where you would plug in the Bluetooth module (purchased separately)
7. Fault protection devices, please do not touch or bend these.
8. DIP switch configurator. See below.
9. Reset fuse. Remove fuse for 10 seconds and replace for reset.

Whenever possible, keep your engine running when powering electrical accessories!

## DIP SWITCH CONFIGURATOR



**AFTER INSTALLATION, YOU MUST START THE ENGINE TO ACTIVATE THE SYSTEM!!**

# INSTALLATION INSTRUCTIONS

## 2016 YAMAHA YXZ

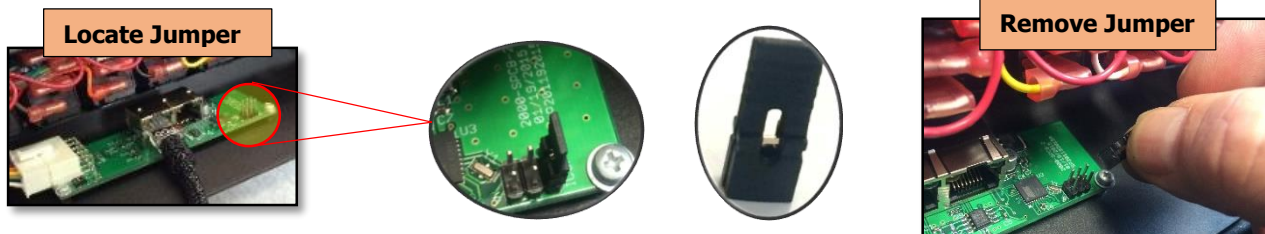


**SWITCH PANEL FLASH AND STROBE FEATURES:** Any or all of the 8 switches can be programmed for **Flash and Strobe** modes. By default, all switches are set in the steady ON mode (flash and strobe features disabled).

**To enable these features, follow this sequence of steps:**

Remove panel from windshield by removing two Phillip's head screws. Without unplugging control cable, lower panel to be able to have access behind it.

- 1) Locate and remove the Jumper (behind panel on the lower right side)

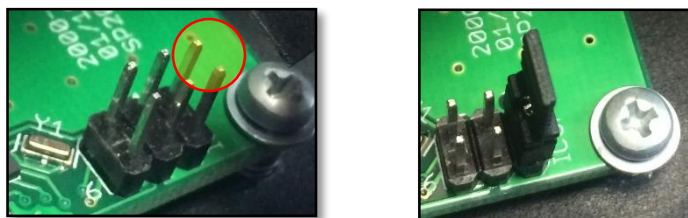


- 2) Decide which switch(es) that you want to enable the Flash and Strobe feature; Turn those switch(es) on (leave on)



PLEASE BE SURE TO ABIDE BY YOUR STATE LAWS WHEN USING FEATURES SUCH AS STROBE AND FLASH.

- 3) Put the Jumper back on the far right pins; Turn switch(es) off



- 4) Test the switch(es) that were enabled (see "How to Use Flash and Strobe Features" below)
- 5) Reinstall the switch panel using the two Phillips head screws.

**How to Use Flash and Strobe Features:**

Starting in the **OFF** position:

Turn the switch **On** for **Steady** mode (normal operation)

Toggle the switch **On/Off/On** quickly to activate **Flash** mode

Toggle the switch **On/Off/On** quickly again to activate **Strobe** mode

Toggle the switch **On/Off/On** quickly again to set to **steady** on mode (normal operation)

**To disable the flash and strobe features and reset to factory default, (with switches in the off position) remove the jumper and put it back on.**

**AFTER INSTALLATION, YOU MUST START THE ENGINE TO ACTIVATE THE SYSTEM!!**