

# INSTALLATION INSTRUCTIONS SE SYSTEM – TOUCHSCREEN 2007 – 2016 JEEP JK WRANGLER

Allow approximately 2 hours for installation



### NOTES AND WARNINGS

- Never reverse polarity on battery cables.
- Keep touchscreen controller out of direct sunlight and temperatures above 160° F.
- Touchscreen controller is NOT water resistant or waterproof, do not get wet. Do not spray cleaner onto unit or into any openings. Always use a soft towel or cloth for cleaning purposes.
- System will shut down when voltage drops to 11.2 V (2 minute delay) and requires 12.8 V to reinitialize.
- Do not tamper, open or remove any factory-installed components; this will void the warranty.

### TOOLS REQUIRED

- Phillips head screw driver
- 10mm & 12mm sockets
- Flashlight

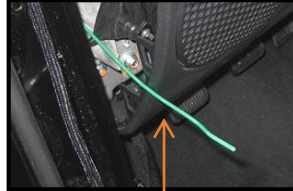
### STANDARD TRANSMISSIONS



Original rubber plug



Use this grommet on upper right side of brake booster



Fish line

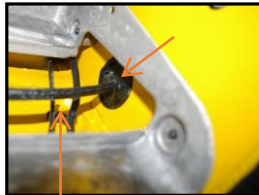


Be sure to keep protective cap on. Form a hook on the end of the fish line and wrap the connector with a little electrical tape.

### AUTOMATIC TRANSMISSIONS Use the foam hole on lower right side of brake booster. (Use the flashlight)



Look up into upper left side of firewall for the harness you just passed through



Use a screwdriver to make a hole in foam to pass through firewall. Push plug through

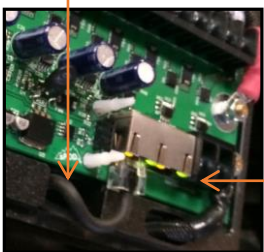


Look on right side of brake booster for pass through



Pull plug through gently by the cable and not the plug

- Run connector up through opening in plastic. Plug into any of the 2 receptacles.



**NOTE**  
These lights are disabled and will not be on

- On driver's side fender, locate two bolts (next to the ECU) as shown below.



Remove these two bolts

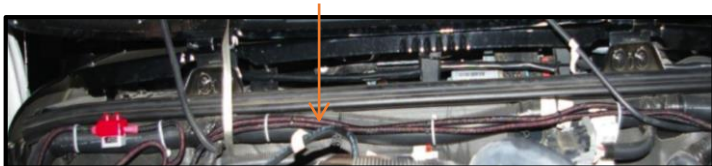


Place plate over holes. Install both bolts and tighten.

# INSTALLATION INSTRUCTIONS SE SYSTEM – TOUCHSCREEN 2007 – 2016 JEEP JK WRANGLER



- Snugly route power leads along firewall over to battery using supplied cable ties to secure.



- Connect **Positive** and **Negative** wire to battery terminals. Use supplied cable ties to secure all cables.



Positive side – 10mm socket

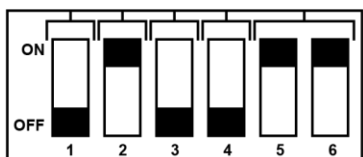


Negative side – 12mm socket

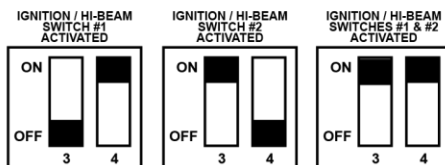
1. Attach your accessories here.  
SWx is the **Positive** and GND is the Negative terminals.
2. Positive battery terminal.
3. Negative battery terminal.
4. Ignition control inputs for switches 1 or 2 only.
5. Switch panel harness input (CAT-5 Ethernet). (TWO)
6. Bluetooth receptacle.
  - This is where you would plug in the Bluetooth module (purchased separately)
7. Fault protection devices, please do not touch or bend these.
8. DIP switch configurator. See below.
9. Reset fuse. Remove fuse for 10 seconds and replace for reset.

Whenever possible, keep your engine running when powering electrical accessories!

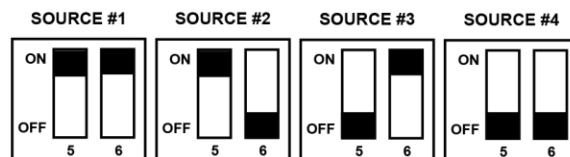
## DIP SWITCH CONFIGURATOR



FACTORY DEFAULT SETTINGS



IGNITION/HI-BEAM CONTROLS FOR SWITCHES #1 AND #2



MULTIPLE SOURCE SELECT SETTINGS

**After installation, you must start engine to activate system!!!**

# INSTALLATION INSTRUCTIONS SE SYSTEM – TOUCHSCREEN 2007 – 2016 JEEP JK WRANGLER



**MAIN CONTROL SCREEN**

"OFF ROAD" MODE ENABLES THE FLASH AND STROBE FEATURES. "ON ROAD" MODE DISABLES THE FLASH AND STROBE FEATURES.

SLIDER USED FOR DIMMING YOUR OFFROAD LIGHTS

TOUCH TO TURN SCREEN OFF. HOLD FOR 1 SECOND TO TURN ALL ACCESSORIES OFF TOUCH IN AREA OF WHERE OFF BUTTON IS TO TURN SCREEN ON

SELECT TO ENTER PROGRAMMING MODE

SOURCE BOARD TEMP NORMAL RANGE IS BETWEEN 0 DEG F & 220 DEG F

BATTERY VOLTAGE MONITOR SYSTEM WILL SHUT DOWN WHEN VOLTAGE DROPS BELOW 11V FOR LONGER THAN 2 MINUTES MUST RESTART ENGINE TO RE-INITIALIZE SYSTEM

**SWITCH PROGRAMMING SELECTION SCREEN**

SELECT SWITCH TO CUSTOMIZE

ADJUST THE BRIGHTNESS OF THE SCREEN

CREATE A MASTER SWITCH THAT WILL ACTIVATE ALL LINKED SWITCHES IN THE GROUP WHEN TURNED ON.

DEFAULT SOURCE IS 1 THIS IS WHERE YOU SELECT WHICH SOURCE TO CONTROL IF YOU HAVE MULTIPLE SOURCES

**SWITCH CUSTOMIZATION SCREEN**

SELECT EACH LINE AND ENTER TEXT. 8 CHAR. MAX PER LINE

USE THIS BUTTON TO ENTER INTO SWITCH FEATURE SCREEN

TOUCH SAVE BUTTON WHEN DONE AND WAIT 1 SECOND FOR BUTTON TO FLASH RED TO SAVE

**SWITCH FEATURE SCREEN**

THIS SHOWS WHAT SWITCH YOU ARE CURRENTLY PROGRAMMING

## “OFF ROAD” / “ON ROAD” MODE:

**Off Road** Selecting the “Off Road” mode enables you to use all of the flash and strobe features that you have programed to use for certain switches (in the “Switch Feature Options” menu.)

**On Road** Selecting the “On Road” mode disables all the flash and strobe features. Switching to “On Road” will change ALL switches currently in flash or strobe mode to solid on.

**PLEASE BE SURE TO ABIDE BY YOUR STATE LAWS WHEN USING FEATURES SUCH AS STROBE AND FLASH.**

# INSTALLATION INSTRUCTIONS SE SYSTEM – TOUCHSCREEN 2007 – 2016 JEEP JK WRANGLER



## LINK

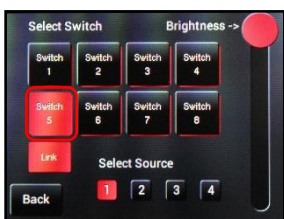
The “Link” option allows you to turn on multiple switches with one (master) switch.

- In the “Switch Programming Selection Screen” start by pressing “Link”



**NOTE** Strobe function must be turned off before you go back into the setting to disable it. If it's left on, then the strobe function will not be disabled.

- Click on any switch to program it as the Master switch



- Click on all switches you wish to link the master switch

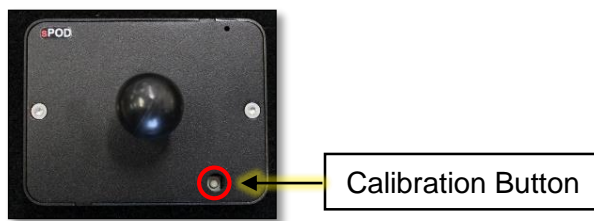
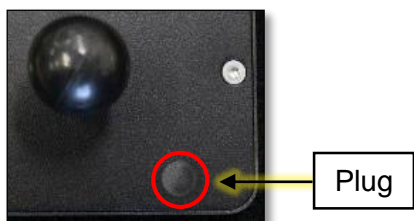


**NOTE** You can still use all grouped switches individually, but turning on the master switch will turn on all switches in the group

- Then click “Link” and “Back”

## CALIBRATION

- Use a small flathead screwdriver to pull off the small plug to expose the calibration button on the back
- Use a pen to press the calibration button
- Follow the instructions on the screen, touching the screen where shown
- Replace the plug when finished



PLEASE BE SURE TO ABIDE BY YOUR STATE LAWS WHEN USING FEATURES SUCH AS STROBE AND FLASH.